

REXGEAR

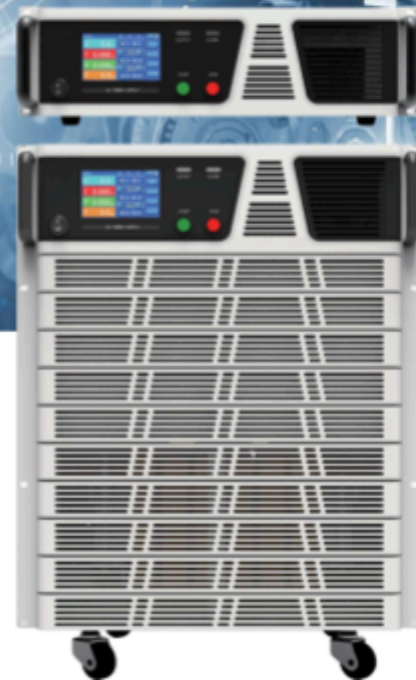
Product

AC Power Supply

Application fields

Over shock capacity

ANFH(F) Series
AC Power Supply



Your Power Solution Expert

AC Power Supply ANFH(F) Series



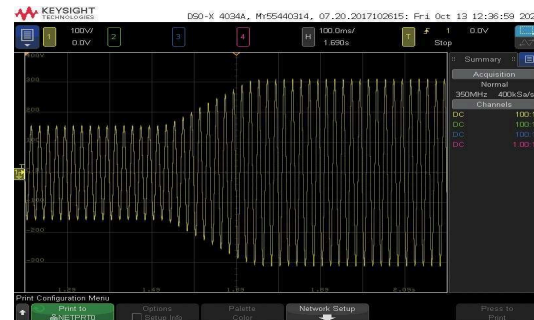
Features

- 19" standard chassis, compact, can be installed in standard cabinet
- Withstand 3 times the rated current lasting for 2S, directly start impact load equivalent to 1/3 of the power
- Adjustment of voltage/frequency in output state
- Startup ramp-up and online ramp-up, and the ramp-up time can be set
- Measurements: voltage, current, frequency, active power
- Voltage level: 1.0~150.0V, 150.1~300.0V automatically adjustable or locked within 1.0~300.0V
- Line voltage drop compensation
- Multi shortcut groups, power-down memory and shortcut keys
- 4.3" color touch screen, convenient and intuitive
- Key lock and humanized design to avoid misoperation
- Operating data recorders: automatically record the power state when alarming and alarm code etc
- Standard RS232 port, optional RS485/GPIB/Ethernet port or analog control

Product Introduction

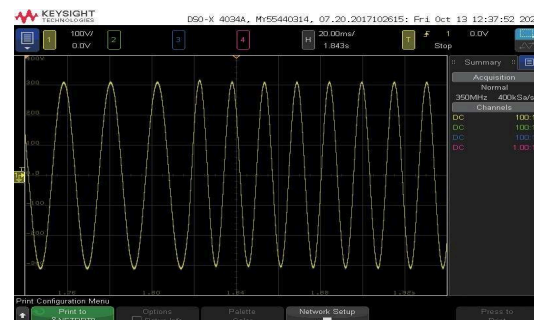
ANFH(F) series AC power supply adopts digital technologies including digital control, instantaneous waveform control, and high-frequency pulse width modulation (SPWM). The power supply has the ability to withstand impact of 3 times the rated current, featuring strong load adaptability, mainly for applications such as home appliances, motors, and production lines, power solutions meeting the essential needs of traditional industries as well as equipment replacement and updates. The power supply is designed suitable for 19" standard chassis, small size and rich interfaces, and can be directly installed in a standard cabinet for various applications such as testing, system integration, production line, etc.; as well as 4.3" color LCD touch screen + plastic shell panel, aesthetic and high-end appearance, and easy-to-use and intuitive operation.

Adjustment of voltage/frequency in output state

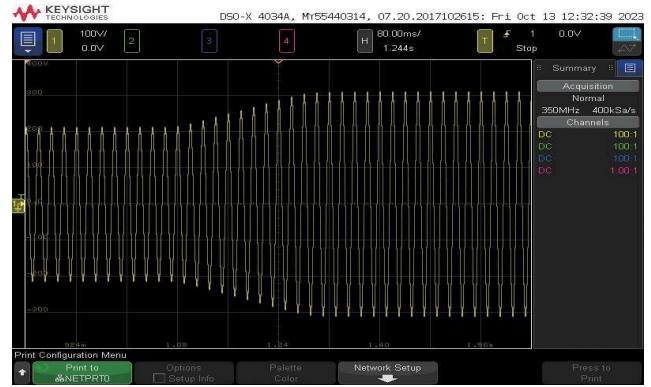
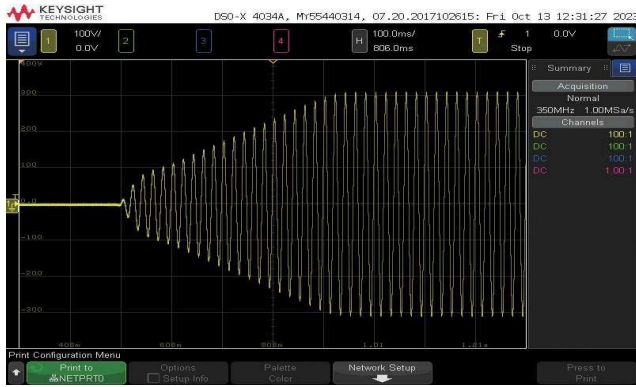


Applications

- Over shock capacity: impact loads with 1/3 power can be directly started without soft start



Start ramp up and online ramp up



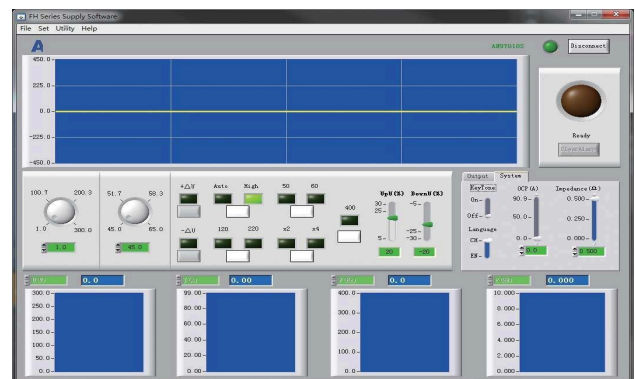
4.3" color touch screen, convenient and intuitive



Online monitoring function



PC control software



Specifications

Model			ANFH000S (F)	ANFH001(F)	ANFH002S(F)	ANFH003S(F)	ANFH005S(F)	ANFH010S(F)	ANFH010TS(F)					
Battery Capacity			500 VA	1 kVA	2 kVA	3 kVA	5KVA	10KVA	10KVA					
AC input	Voltage	Single-phase three-wire	3-phase 4-wire											
		3-phase 4-wire	N/A							480V(L-L) ±10%, 440V(L-L) ±10% or 380V(L-L) ±10%				
	Frequency		50/60±3 Hz											
AC output	Way/ Number of phases		Single-phase sine wave Output											
	Voltage		In normal state: (Low voltage) 1.0 ~ 150.0V, (High voltage) 150.1 ~ 300.0V In the high-end locked state: (High voltage) 1.0 ~ 300.0V The adjustment step is 0.1V											
	Frequency		45Hz ~ 65Hz continuously adjustable, 100Hz, 120Hz, 200Hz, 240Hz, 400Hz											
	Rated current	110 V	4.6A	9.2A	18.2A	27.4A	45.6A	91.0A	91.0A					
		220 V	2.3A	4.6A	9.1A	13.7A	22.8A	45.5A	45.5A					
	Precision	Voltage	Resolution: 0.1 V Precision: 45~65Hz/110V±10%/220V±10% (0.2% × setting+0.2% × full range) Others range (0.4% × setting+0.4% × full range)											
			Resolution: 0.1 Hz Precision: ±0.05%											
		Current	Resolution: 0.001A/0.01A/0.01A Precision: (0.3% × display+0.3% × rated output)											
			Power	Resolution: 0.001 kW /0.01kW Precision: 45-65Hz: (0.45% × display+0.45% × rated output) Others: (0.8% × display+0.8% × rated output)										
	Frequency stability		0.02%											
	Voltage distortion		Linear load: ≤1.5% (110/220V±10%, 50/60Hz±10%), ≤2% (other ranges)											
	Transient recovery time		20 ms											
	Source voltage effect		1%											
	Load effect		1%											
	Overload capacity		105% x rating < output ≤ 110% x rating, turn off the output within 15 seconds; 110% x rating < output ≤ 200% x rating, turn off the output within 5 seconds; 200% x rating < output ≤ 300% x rating, turn off the output within 2 seconds; 300% x rating < output, turn off the output immediately.											
	Shock resistance		Withstand 3 times rated current for 2S											
	Protection mode		Overheat Protection, Output overcurrent, Output overload, Output short-circuit											
	Efficiency		≥70%											
Function	Display mode		4.3-inch color LCD touch screen											
	Online adjustment function		The output voltage and output frequency can be adjusted online											
	Memory		Last boot parameters											
	Shortcut group		7 groups of parameters can be set, fast switching											
	Soft-start time		0.0~99.9Sec.											
	Line voltage crop compensation		0.000 ~ 0.0500 Ω											
	Communication		Standard RS232, optional RS485/GPIB/network port/analog control port											
Working Environment	Temperature, humidity		0~40℃, 20%~90%RH											
Dimensions W×H×D (mm)			3U		3U		4U		11U		13U			
			432×133(148)×400		432×133(148)×550		432×177(192)×550		432×488(563)×400		432×577(662)×400			
			The (*) means the height including machine foot, the feet can be removed.						The (*) means the height including machine caster, the casters can be removed.					
			Width is 432mm(handle excluded), 19" standard chassis is: 483mm(handle included), handle is optional.											
Weight (Kg)			17		26		35		59		82			

Any changes to the above parameter specifications will not be notified separately.



YOUR POWER TESTING TURNKEY SOLUTION

This information is subject to change without notice. For more information, please contact REXGEAR.

REXGEAR USA

12B Mauchly, Irvine, CA 92618

Website: www.rexgear.com

TEL: +1 (951) 88803128

E-mail: info@rexgear.com

REXGEAR Mexico

Querétaro, Qro., Mexico 76148

Website: www.rexgear.com

TEL: +52 (814) 170-8244 E-mail:

info@rexgear.com.mx



REXGEAR LinkedIn